

# More Precision.



## optris® P20 Series

Infrared thermometers for demanding applications



### FEATURES

- Temperature ranges from 0 - 1800°C
- High optical resolutions up to 300:1
- Precise aiming with laser and scope sighting
- Adjustable emissivity from 0.100 - 1.000
- Different spectral responses for a variety of advanced applications
- MAX/MIN function and audible and visible HIGH-/LOW-alarm
- USB interface, Optris Connect Software
- Data logger for 2000 measured values

General specifications	
Ambient temperature	0 - 50°C
Storage temperature	-20 - 60°C (no battery)
Relative humidity	10 - 95 %, non condensing
Size	264 x 203.5 x 60 mm
Weight	1000 g
Electrical specifications	
Outputs/digital	USB interface
Power	Ni-MH rechargeable battery
Battery life time	5 h laser and backlight on 25 h w/o laser and backlight
Charge	Battery charger
Adapter	220 VAC, 50/60 Hz

Measurement specifications	
Temperature ranges	0 - 1300°C (P20 LT) 650 - 1800°C (P20 1M) 385 - 1600°C (P20 2M)
Optical resolution P20 LT	120:1
Optical resolution P20 1M/2M	300:1
System accuracy P20 LT	±1% or ±2°C <sup>1)</sup>
System accuracy P20 1M/2M	±(0,3% of reading ±1°C)
Repeatability P20 LT	±0,5% or ±1°C <sup>1)</sup>
Repeatability P20 1M/2M	±(0,1% of reading ±1°C)
Response time P20 LT	300 ms
Response time P20 1M/2M	100 ms
Emissivity (adjustable)	0.100 - 1.000
Sighting P20 LT	Single laser class II (< 1 mW)
Sighting P20 1M/2M	Double laser class II (<1 mW)
Sighting scope	All models
Signal processing	MAX/MIN, Scan/Hold function
Alarm functions	Audible and visible HIGH/LOW alarm
Data storage	2000 values
LCD-Backlight	Three color alarm indication

<sup>1)</sup> whichever is greater

# optris® P20 Series

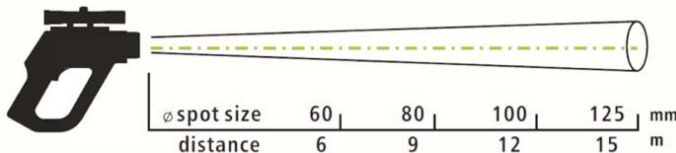
Technical data	P20 LT	P20 1M	P20 2M
Temperature range	0 - 1300°C	650 - 1800°C	385 - 1600°C
System accuracy	±1% or ±2°C <sup>1)</sup>	±(0,3% of reading ±1°C)	
Repeatability	±0,5% or ±1°C <sup>1)</sup>	±(0,1% of reading ±1°C)	
Optical resolution (D:S)	120:1	300:1	
Response time (95%)	300 ms	100 ms	
Spectral range	8 - 14 μm	1.0 μm	1.6 μm
Emissivity		adjustable	
Alarm		•	
Laser	•	• (double laser)	
Focus	100 mm @ 12 m	12 mm @ 3,6 m	
Sighting Scope		•	
Outputs / digital		USB interface	
MAX/MIN/HOLD		•	
Data Logger		2000 values	
Software		Optris Connect Report Software	
Battery Charger		•	
Ni-MH battery		•	
Carrying case		•	
Tripod mount		1/4 inch - 20 UNC	

<sup>1)</sup> whichever is greater

- Standard accessories

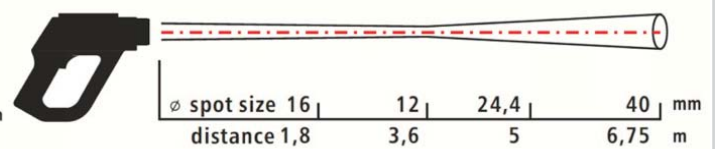
## Optical specifications

P20 LT



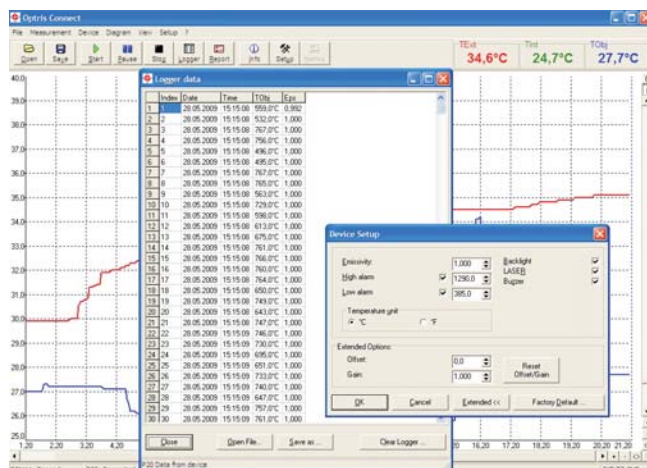
D:S = 120:1

P20 1M/2M



D:S = 300:1

## Optris Connect Report Software



- Setup of parameters
- Download of logger data
- Display and record of temperature trends
- Image based report function

Generalagent och distributör:  
**Sensotest AB**  
 Girovägen 13 - 17562 Järfälla  
 Tel: 08-564 733 80 Fax: 08-564 733 89  
 www.sensotest.se info@sensotest.se